

TOMTOM®  WORK

Connected Navigation



Always connected to your people on the road.

# What is Connected Navigation?

**Connected Navigation is the smartest way to keep you in touch with your people on the road.**

Connected Navigation helps you improve the management and control of your vehicles and drivers. It provides simple two-way communication and navigation for your people on the road and easy management and vehicle location in the office.

TomTom WORK has taken the best vehicle management practices and added TomTom's award winning, user-friendly navigation tools.

We have developed a solution to meet the needs of cost sensitive, customer-focused businesses. The result? Connected Navigation.

**With Connected Navigation your business can:**

- Boost service
- Increase profitability
- Improve productivity
- Reduce impact on the environment
- Comply with legislation

It is both affordable and scalable to the needs of your business. There's no software involved and no need for IT support or maintenance. This makes Connected Navigation suitable for pretty much any size or type of business.

TomTom WORK offers the all-in-one business solution to keep you connected with your people on the road.

## TomTom WORK Active

**TomTom WORK Active is a secure Connected Navigation solution. Installation of the TomTom LINK 300 in your vehicles maintains a secure active connection to the TomTom WEBFLEET® application. TomTom WORK Active is extremely reliable and ensures that you can always locate your vehicles.**



**It's easy.**

Your drivers can communicate, navigate and receive orders using the TomTom GO 7000.

Vehicles installed with TomTom LINK 300 are always connected to the office and have a two-way communications link between the driver and the office staff.

TomTom WEBFLEET® has everything you need to manage your commercial vehicles online. Enabling you to make reports, send and receive messages, co-ordinate movements and manage your drivers from the office.

# What are the benefits?

## Connected Navigation benefits your business, your staff and your customers.

### Your fleet drives more efficiently and covers less distance which saves you time, money and fuel

- Avoid delays with TomTom HD Traffic™, your realtime traffic information service for use on main roads and motorways.\*
- By taking the smartest routes, your drivers arrive on time and are stress-free when they meet your customers. Thanks to IQ Routes™ technology, the TomTom GO 7000 knows the real speed of traffic on the roads for any time of the day and every day of the week. That means your driver always find the best route to your customers.
- The roadways and access routes are changing every day, but with TomTom Map Share™ your drivers always have access to the most up-to-date maps.

### Safe and efficient communication between the office and staff in the field

- Avoid expensive mobile phone charges by communicating clear sales order instructions on the TomTom GO screen.
- Exchange (pre-defined) text messages between the planners and the mobile workers.

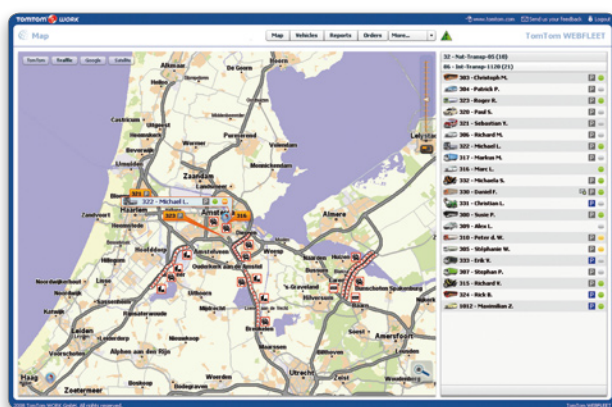


### Real-time management of orders and vehicles

- Easily locate your vehicles using digital maps.
- At-a-glance overview of every job status
- Easily allocate tasks to the people best placed to accept a new job request.
- Offer a more proactive service by providing your customers with realistic arrival times.

### Extensive reporting made simpler and clearer for everyone

- Manage your service costs and efficiency by having business intelligence available at your fingertips. Generate daily, weekly or monthly trip reports including driving times and working hours, sales orders and messages and much more.
- Enjoy instant access to the key indicators that you set for your business
- Watch trends and benchmark your performance



### Incredibly user friendly

- No software installation, training or IT maintenance necessary
- Simple installation inside vehicles due to the integrated antenna and Bluetooth® communication.

## TomTom LINK 300



This slim black box is installed in each vehicle and contains a SIM card. TomTom LINK 300 enables two-way text communication between a coordinator using TomTom WEBFLEET® and the drivers on the road using a TomTom GO 7000. TomTom LINK 300 not only enables you to locate the vehicle, but you can follow its progress in real-time at any time. TomTom LINK 300 is easily installed on the dashboard, on the windscreen or hidden inside the dashboard. Communication with the TomTom navigator is via Bluetooth® which removes the need for cables between devices.

## TomTom GO 7000

This smart navigation and communication device is the perfect aid for the professional driver. It calculates the smartest route for any time of day which helps your drivers to travel safely and efficiently to your customers. Saving your business time, money and fuel. Tailored to the needs of the professional driver, the TomTom GO 7000 features:



- Two-way communications
- Text-to-speech, tell your device where to go
- Help Me emergency menu, to find help quickly

- Hands-free calling
- Advanced Lane Guidance, for extra clarity when navigating difficult junctions.
- Real-time route information\* like HD Traffic™, Fuel prices, Weather and Local search with Google

## TomTom WEBFLEET®

TomTom WEBFLEET® is an online fleet and order management application that is available 24 hours a day, from any computer with an Internet connection.

The interactive map provides everything you need, right at your fingertips – vehicle status, driver details, destination address and estimated time of arrival. You will be able to plan efficiently and immediately respond to your customers with reliable real-time information.

A wide range of reports are available including detailed information on trips, stops, working hours and speed profile.



On top of that, TomTom WEBFLEET® can be integrated with your existing software applications to further improve business efficiency. High quality data exchange with your CRM, planning or billing systems gives you total process control.

To find out more about TomTom WORK, please visit our website for a guided product tour, detailed technical specs, user cases for reference and much more. Contact us via [sales.uk@tomtomwork.com](mailto:sales.uk@tomtomwork.com) where our dedicated British team will be happy to answer any questions you may have; or discuss the easy, smart, connected navigation solution that would be right for your business. [www.tomtomwork.com](http://www.tomtomwork.com)

\* Check [www.tomtom.com/liveservices](http://www.tomtom.com/liveservices) for country availability of the TomTom LIVE services. TomTom WEBFLEET subscription required.